

WFDF 2026

World Team Disc Golf Championships

8 - 12 September 2026
Vilnius, Lithuania



WFDFCC 2022



Photo: Co Vilnius, Gabriel Khiterer

Bulletin #2
(Issued January 2026)

WHAT'S NEW SINCE BULLETIN #1

Information in this Bulletin #2 is an update and additional information source - you are still strongly urged to keep and read Bulletin #1 for general and overview event information.

Since the publication of Bulletin #1, WFDF has confirmed several key elements of the event structure in order to provide teams with greater clarity for travel planning and logistical preparations.

The WFDF 2026 World Team Disc Golf Championships will now follow a five (5) day competition schedule:

- ▶ Tuesday 8 September to Saturday 12 September 2026
- ▶ Teams should plan to be available to play on Tuesday, 8 September
- ▶ The first matches are expected to start around midday

This confirmation replaces the previously outlined 4-day provisional option and allows teams to finalise travel arrangements with greater confidence.

Based on the current registration and payment status, WFDF anticipates participation from approximately 50–55 national teams across both divisions:

- ▶ Approximately 28 Open teams (with a potential maximum of up to 35)
- ▶ Approximately 18 Masters teams (with a potential maximum of up to 25)

For those teams who have not yet paid, please help **secure your bid by making immediate payment**, so we can plan accordingly.

WFDF recognises that some National Federations have not yet been able to formally confirm their participation due to internal selection procedures and approval processes, including the finalisation of national team rosters. In addition, for some smaller or developing Disc Golf nations, participation depends partly or entirely on self-funded athlete and contributions, which may require additional time to confirm. We kindly ask any team in this situation, to stay in contact with us with updates and milestones as you make decisions.

These factors have been taken into account when applying a flexible approach to confirmation deadlines. As a result, the final list of participating teams is expected to be confirmed around 15 February 2026. We do however, confirm the **event has reached critical mass and we give you all a green light to book flights and accommodation.**

Bulletin #2 focuses on operational and planning information for participating teams. It provides updated guidance on the confirmed event schedule, venue and course allocation, accommodation planning, transport, catering options, and key deadlines. New sections covering team uniforms, media and photo use, and side events and social programme elements are also introduced.

Several logistical items, including accommodation arrangements, are still being finalised in close coordination with the Local Organising Committee (LOC). Where applicable, these elements are clearly marked as provisional and will be confirmed in future updates.

WFDF encourages all teams to carefully review the information in this bulletin and to continue monitoring official communications as further details are confirmed in the lead-up to the event.

CONFIRMED EVENT SCHEDULE (Day-by-Day)

Team arrivals and practice opportunities:

- ▶ Team arrivals and unofficial practice opportunities will be available in the days leading up to the event
- ▶ Official practice sessions must be booked in advance
- ▶ An online booking system for practice sessions will be made available prior to the event
- ▶ Team Registration will take place on Monday and Tuesday before the first games

Saturday 5 September

- ▶ Courses open for unofficial practice

Sunday 6 September and **Monday 7 September**

- ▶ Courses open for official practice
- ▶ Team Registration for those teams already in Vilnius
- ▶ Captains' Meeting (Monday, 6:00 PM)

Tuesday 8 September

- ▶ Courses open for official practice
- ▶ Team Registration – continued
- ▶ Competition rounds, to start at 12:00 PM or later
- ▶ Opening Ceremony (early evening)

Wednesday 9 September to **Friday 11 September**

- ▶ Competition rounds on both courses, Quarter Finals and Semi Finals

Saturday 12 September

- ▶ Standings Finals, Bronze Medal and Gold Medal matches
- ▶ Medal and Closing Ceremony (late afternoon)

Should weather conditions or other unforeseen circumstances cause delays, the schedule may be adjusted to ensure that all competition rounds are completed by the evening of Saturday 12 September.

Attendance requirements:

- ▶ All teams are expected to attend the Opening Ceremony
- ▶ Only team captains (or their designated representatives) are required to attend the Captains' Meeting

Further details regarding exact times, locations, and daily course allocation will be communicated closer to the event.

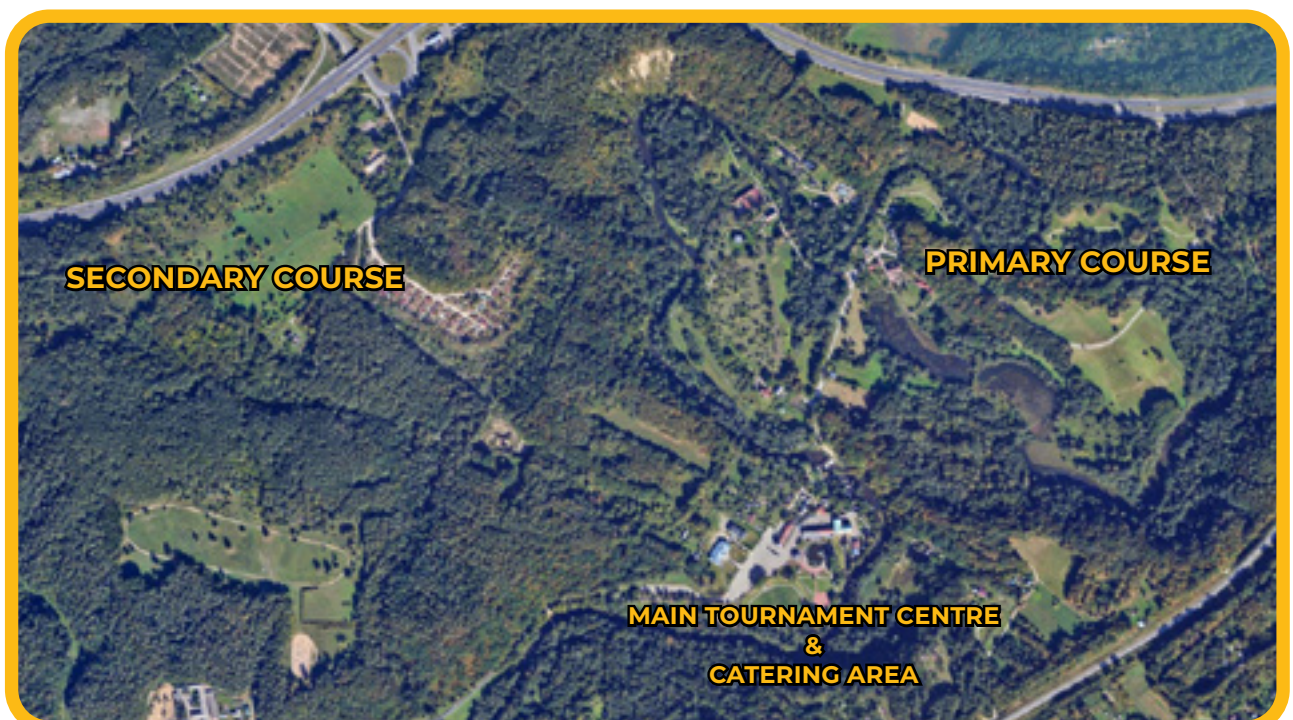
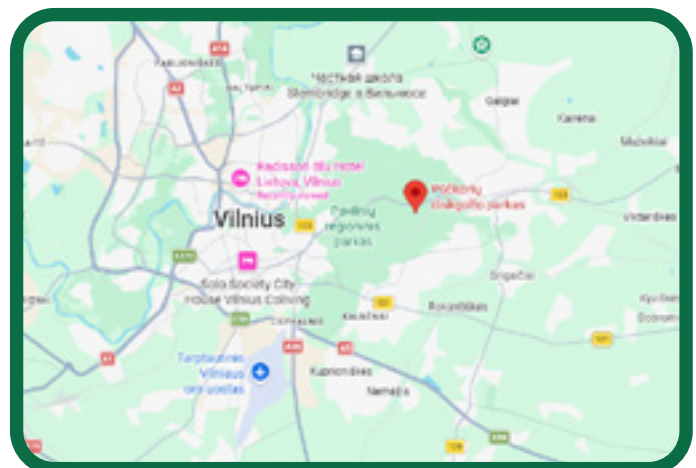
A more detailed round-by-round schedule, including Open and Masters division assignments, will be published once the final number of participating teams is confirmed.



EVENT VENUES & COURSE ALLOCATION

The event will be played primarily on two 18-hole courses of comparable championship standard, allowing parallel scheduling of matches across divisions and efficient use of daylight and course resources.

- ▶ Main competition area: **Pavilniai Regional Park, Vilnius**
- ▶ Primary course
Pūčkoriai Disc Golf Course ("The Pilgrim")
<https://maps.app.goo.gl/NrFWm1nfFm9ToAaNA>
- ▶ Main Tournament centre & Catering area
Official tournament centre, team catering and daily operations
<https://maps.app.goo.gl/MXfL7eMBwta3u4rR9>
- ▶ Secondary course
Temporary 18-hole championship layout
Location to be confirmed by LOC, approximately a 10–15 minute walk from the primary course
- ▶ Matches will be played on two courses in parallel
- ▶ Courses will not necessarily be adjacent
- ▶ Final course allocation by division and day will be confirmed at a later date
- ▶ Detailed course maps, layouts, and daily assignments will be shared with teams closer to the event



ACCOMMODATION OVERVIEW

The Local Organising Committee (LOC) has secured an official event hotel for WTDGC 2026, intended to accommodate the majority of participating teams and to serve as the main logistical hub of the event.

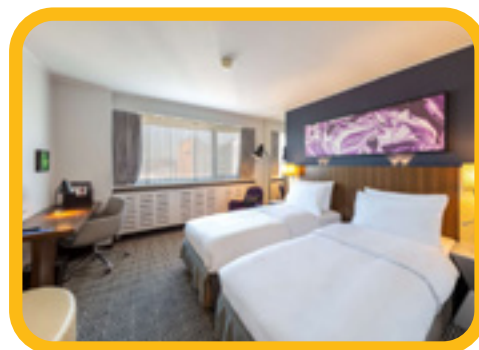
The official hotel is **Radisson Blu Hotel Lietuva (4*)**, located at Konstitucijos pr. 20, Vilnius, within easy reach of the city centre and main transport routes.

Standard Rooms **165 twin rooms (330 beds)**

- ▶ 65 EUR per person (twin occupancy)
- ▶ 120 EUR per room (single use)

Room size: 18 m²

Includes all basic in-room amenities, such as Wi-Fi, individual climate control, coffee and tea facilities, TV, in-room safe, iron and ironing board, and hair dryer.

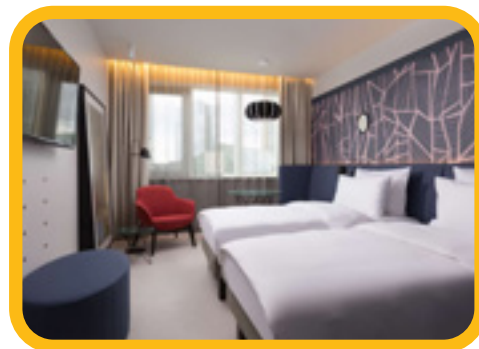


Premium Rooms **35 twin rooms (70 beds)**

- ▶ 70 EUR per person (twin occupancy)
- ▶ 130 EUR per room (single use)

Room size: 24 m²

Includes all Standard Room amenities, with increased room size and a rain shower.



Suite Rooms **30 twin rooms (60 beds)**

- ▶ 80 EUR per person (twin occupancy)
- ▶ 150 EUR per room (single use)

Room size: 32 m²

Includes all Premium Room amenities, plus a separate living area, bathrobe and slippers, sleep well pillow spray, and evening turndown service.



All prices include:

- ▶ Rich buffet-style breakfast
- ▶ Organised transfers between the hotel and the courses
- ▶ Wi-Fi access
- ▶ Access to the wellness centre (saunas, jacuzzi, gym)
- ▶ All applicable city and local taxes

A room block has been reserved for the period 7–13 September 2026, with the possibility of early arrival or extended stay, subject to availability.

All official meetings, including captains' meetings and selected briefings, will take place at the official hotel.

Booking & Payment

To manage the block booking allocation at the rates secured, **accommodation at the official hotel will be booked via the LOC**, which will manage all booking-related communication, logistics, and catering coordination.

All teams wishing to book accommodation at the official event hotel are kindly requested to contact the LOC accommodation coordinator, **Ričardas Zareckis** (wtdgc2026@gmail.com)

- ▶ Booking deadline: 15 May 2026
- ▶ Payment deadline: 15 June 2026
- ▶ Payment method: direct payment to the LOC (Lithuanian Flying Disc Federation)
- an invoice will be issued.

After 15 June 2026, cancellations will no longer be possible, although minor rooming changes may still be accommodated where feasible.

Teams will receive detailed booking instructions, including contact details and procedures, directly from the LOC via email.

A virtual room tour is available here:

<https://www.gidas360.lt/hmd/radissonblu/lietuva/tour.html>

Parking Information (Official Hotel Area)

All parking in the area surrounding the official hotel is paid parking, including on-street parking. Parking is not owned or operated by the hotel. The nearest option is UNIPARK, a public parking facility located near the hotel, which can be arranged via the hotel reception. Parking fees are charged separately and are not included in the room price.

Approximate parking rates:

- ▶ UNIPARK parking near the hotel: 15–22 EUR per day, depending on the parking zone
- ▶ Street parking and nearby open public parking areas: 2.5 EUR per hour, applicable from 08:00 to 22:00

Advance reservation of parking spaces is not possible. Parking can be arranged only upon arrival and is subject to availability.

All nearby parking garages and park-and-ride options are public facilities and operate under standard local regulations and pricing.

Additional Facilities & Location (Official Hotel)

The official event hotel offers suitable meeting and common spaces to support both operational and social aspects of the championship.

A conference room will be available at the hotel for the Captains' Meeting and selected official briefings.

The hotel is located in the city centre of Vilnius, with the historic Old Town reachable within a 5-minute walk by crossing the nearby bridge. This central location allows teams and participants to easily explore the city before and after competition days.

In the immediate vicinity of the hotel, participants will find a wide range of cultural attractions, recreational facilities, shopping centres, and dining options, making the area well suited for both teams and accompanying supporters.

Other Accommodation Options

Teams choosing to arrange their own accommodation are welcome to do so. Please note that teams staying outside the official hotel will be responsible for organising their own transport to the courses and official event locations.

TRANSPORT & GETTING AROUND VILNIUS

For teams staying at the official event hotel, organised transfers between the hotel and the competition courses will be provided by the LOC. Transportation timetables will be restricted to morning and afternoon shuttles, not on an on-demand schedule.

Transfers are included in the accommodation price for teams staying at the official tournament hotel. For teams staying at other accommodation, transfers may be available for an additional fee, subject to availability. All organised transfers will operate exclusively between the official hotel and the courses.

Transfers will run on competition days only, with the following general schedule:

- ▶ Morning transfers: two departures from the official hotel to the courses
- ▶ Evening transfers: two return departures from the courses to the hotel

Please note that organised transfers will not be available on practice days. Teams are responsible for arranging their own transport on official and unofficial practice days.

Detailed transfer schedules, departure times, and on-site procedures will be communicated to participating teams closer to the event.

Teams not staying at the official hotel are responsible for organising their own daily transport, unless alternative arrangements are confirmed separately with the LOC. There is parking at both courses for standard vehicles.

Reaching the course by public transport

The competition courses are accessible by public transport, with bus stops located within short walking distance of the courses. Total travel time by public transport from the city centre or official hotel area is approximately 40 - 60 minutes, depending on the route and connection.

Taxi travel time to the courses is approximately 15 - 20 minutes, with an estimated cost of 8 - 10 EUR per vehicle.

Detailed transfer timetables, public transport route suggestions, and on-site procedures will be communicated to participating teams closer to the event.

FOOD OPTIONS & DAILY CATERING

Catering for WTDGC 2026 will be organised in coordination with the LOC and is designed to provide convenient and high-quality meal options throughout the event.

Breakfast will be provided daily at the official event hotel for teams staying there and is included in the accommodation price.

Lunch (optional pre-purchase plan) will be available near the competition courses and provided by an on-site restaurant located in a pleasant and welcoming setting within close proximity to the playing areas. The lunch location is situated approximately 5–15 minutes' walk from the Pilgrim course.

Lunch will consist of soup and a main course, with three meal options available daily:

- ▶ Fish
- ▶ Chicken or meat
- ▶ Vegetarian

Meal selection can be made on the spot.

The estimated price for lunch is approximately 20 EUR per person per day.

Dinner will be offered at the official event hotel in the form of a buffet-style meal. The estimated price for dinner is approximately 30 EUR per person.

Teams ordering both lunch and dinner packages will receive an additional 10% discount on the combined meal price.

All meals must be pre-ordered and paid in advance by the team via the LOC, with the ordering deadline expected to be by the end of July 2026. Detailed ordering instructions, payment procedures, and deadlines will be communicated directly to participating teams. Further information regarding daily menus, ordering forms, and meal schedules will be shared once finalised.

REGISTRATION, PAYMENTS & DEADLINES - Status Update

WFDF recognises that National Federations are currently at different stages of internal approvals and funding confirmations. For this reason, payment timelines are being managed with a degree of flexibility, particularly for teams awaiting final confirmation. Updated payment deadlines will be communicated directly to participating teams once the final team list is confirmed, currently expected around mid-February 2026.

Once participation is formally confirmed and invoiced, the **team fee is non-refundable**. Any bank or transfer fees are the responsibility of the paying party. Any outstanding balances must be settled prior to or during on-site team registration.

Player fees include event accreditation & liability insurance, access to courses and competition rosters, participation in official meetings and social events, and eligibility to receive medals. Non-playing team staff and guests will receive equivalent accreditation access but will not appear on the official competition roster. Caddies must be fully registered and meet all rules and regulations as per the PDGA Caddy rules.

National Federations are encouraged to communicate any specific challenges or pending confirmations directly to the WFDF Events Team, as this information is essential for accurate planning and coordination.

For any questions regarding registration, invoicing, or participation status, please contact the WFDF Events Team at events@wdf.sport

SIDE EVENTS, CEREMONIES & SOCIAL PROGRAMME

WTDGC 2026 is designed to offer more than just on-course competition, with a range of ceremonial and social activities planned throughout the event week, including:

- ▶ Opening and Closing Ceremonies
Planned to take place outdoors, within walking distance of the official hotel.
In case of unfavourable weather conditions, ceremonies may be relocated to indoor venues.
- ▶ Social gatherings and informal activities
The official hotel restaurant and terrace may be used for informal team gatherings and social interaction.
A large active sports and leisure area located near the hotel will serve as a key social hub during the event week.
- ▶ Side competitions and fan activities
Selected informal activities and side competitions will be organised for participants and fans during the championship week.

- ▶ **Charity Auction**
WFDF plans to include a Charity Auction as part of the social programme, continuing a long-standing tradition within the Disc Golf community. Teams and participants will be invited to contribute items representing their country, team, or Disc Golf culture. Further details regarding timing, format, and contribution guidelines will be shared closer to the event.
- ▶ **Exploring Vilnius**
The central location of the official hotel provides easy access to nearby museums, galleries, theatres, shopping centres, and recreational facilities, allowing participants and supporters to enjoy Vilnius beyond the competition schedule.

Further details regarding ceremony timings, social activities, and optional side events will be communicated to participating teams once finalised.

TEAM UNIFORMS

All players and caddies actively involved in matches are required to wear their **official national team uniform**. This section clarifies existing requirements and introduces additional mandatory elements aimed at improving on-course communication, officiating, and media presentation. Anyone not in uniform (regardless of registration status) will be treated as a spectator.

1. General Uniform Requirements

The uniform must include:

- ▶ an upper garment (shirt, blouse, jacket)
 - ▶ with sleeves (short or long)
 - ▶ with a collar
 - ▶ clean, undamaged, and presentable to the public and media
 - ▶ upper garment should clearly identify the country you are representing
- ▶ a lower outer garment (shorts, skirt, trousers)
- ▶ shoes or appropriate footwear (bare feet are not allowed)

2. Collar clarification

- ▶ A collar is required; however, a traditional polo-style collar is not the only acceptable option.
- ▶ In practice, polo collars are often worn with one or more buttons undone, which is common during play and normal for player comfort. When combined with movement and repeated use of disc golf bags, this can result in the collar sitting unevenly and appearing less tidy or consistent during competition.





Examples of different types of sports collar

- ▶ For this reason, alternative sport-specific collar constructions should be considered by teams, provided they:
 - ▶ maintain a clean and professional appearance throughout play
 - ▶ are part of a commercially produced sports garment

This clarification is intended to support a consistently professional visual standard, while also avoiding misinterpretation of the term “collar” as only a polo-style collar, particularly for non-native English speakers.

3. Mandatory player identification elements (NEW – REQUIRED)

To improve communication, officiating, and match management, the following elements are mandatory for WTDGC 2026.

Player number (right shoulder)

- ▶ Each player and caddie must have a two-digit identification number.
 - ▶ Number format: 01–99
 - ▶ Numbers from 1 to 9 must be written with a leading zero, e.g. 01, 02, 03.
- ▶ Placement: right shoulder.
- ▶ Players and non-playing caddies must register for the competition using their assigned number, and the same number must be used consistently throughout the entire event.
- ▶ Caddies are considered an active part of the team, and are therefore subject to the same identification, registration and accreditation requirements as players.



Number size: ▶ height: 65-70 mm
 ▶ width: proportional to the font used

The font used for numbers and text may follow the design and typography of the team uniform, provided they remain clearly legible.

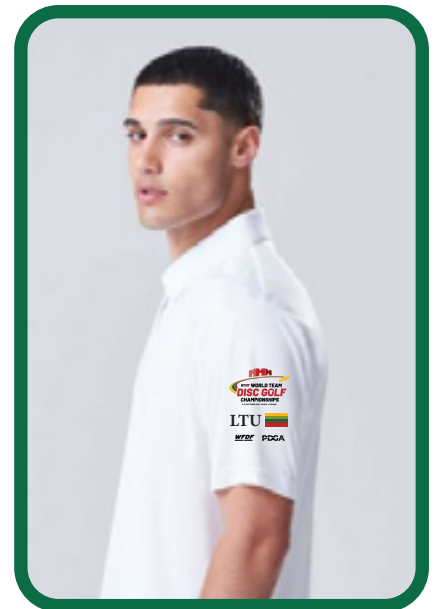
Identification panel (left shoulder)

The left shoulder area must display the following elements:

- ▶ WTDGC 2026 event logo ▶ height: 45-50 mm
- ▶ IOC country code (3-letter code - find it on the [WFDF website](https://www.wfdf.org/))
 - ▶ letter height: 15-20 mm
- ▶ National flag ▶ height: 15-20 mm
 - ▶ width: proportional to the official flag format
- ▶ WFDF logo ▶ height: 8-10 mm
- ▶ PDGA logo ▶ height: 8-10 mm

For smaller shirt sizes, all elements may be proportionally reduced, provided readability is maintained.

If teams require assistance with the layout of the identification panel area, or need access to the correct official logos to be used, please contact Dinko Šimenc at dinko.simenc@wfdf.org for support and guidance.



4. National design elements

- ▶ The shirt or top must display the country name prominently, using the official national naming convention or a commonly accepted national form (e.g. *Germany / Deutschland, Netherlands / Holland*).
- ▶ The chosen country name must be acceptable both to WFDF and to the country it represents. If there is any uncertainty, teams are encouraged to contact the WFDF Events team for confirmation.
- ▶ It is recommended that the country name is placed on the upper back of the shirt.
- ▶ The overall design and colour scheme of the uniform should be representative of the culture and heritage of the country.
- ▶ Examples include (but are not limited to): national colours, cultural symbols, or widely recognised national imagery (e.g. red, white and blue for France; bald-headed eagles for the USA; the Trianae Orchid for Colombia; Romulus and Remus for Italy).
- ▶ Sponsor logos are permitted, provided they do not dominate or visually override national identifiers.



5. Additional recommendations

- ▶ Recommended to place on the front:
 - ▶ player name
 - ▶ PDGA number
- ▶ It is recommended that teams have:
 - ▶ two different coloured shirts/tops
 - ▶ two shirts per each top
- ▶ If multiple colours are used, all players from the same country must wear the same colour during each match.
- ▶ A third official set may be used by non-playing team members for recognition and media purposes.

6. Use of existing team uniforms

Teams that plan to use existing team uniforms may do so, provided that all mandatory elements introduced for WTDGC 2026 are fully complied with.

If existing uniforms do not include the newly required identification elements on the sleeves, it is perfectly acceptable to add these elements as an additional print layer, rather than producing entirely new shirts.

In such cases, the use of overprint solutions (e.g. DTF – Direct to Film printing, or equivalent high-quality textile printing methods) is considered acceptable.

FORMAT OF PLAY

Each team match is played between two nations and consists of a combination of two Doubles match-play matches and two Singles match-play matches.

All doubles matches will be played as Modified Alternate Shot Matchplay, while singles matches will be played as straight Matchplay.

For each team match, a nation will nominate a six-player roster, which must always include:

- ▶ For Open teams: four MPO players and two FPO players
- ▶ For Masters teams: three MP40 players, two FP40 players, and one MP50 player

Players are ranked for each team match according to their PDGA ratings. The highest-rated MPO player listed for that match is designated MPO1, the second-highest MPO2, and so on.

Each round provides different combinations of players competing against each other. For example, in Round 1, Singles matches may be played by MPO1 and MPO2 against the corresponding Singles players of the opposing nation, while Doubles matches may be played by MPO3 & MPO4 and FPO1 & FPO2. In subsequent rounds, the same player combinations are not repeated; for instance, Round 3 may feature Singles played by MPO3 and FPO1, and Doubles played by MPO1 & FPO2 and MPO2 & MPO4.

The format combinations for each round of play will be announced in advance of the event. Each nation will play a total of eight team matches during the competition.

On every hole, the Singles match will always tee first, followed by the Doubles match.

Each player in a division is allocated two or three Singles matches and five or six Doubles matches over the course of the event. This structure is designed to ensure balanced participation and equal competitive access for all players across divisions.

If a team consists of more than six players and substitutes players between matches, some players may not play an equal number of matches. Such decisions are at the discretion of the team Captains and Managers.

To ensure fairness and support Spirit of the Game principles, team matches will be started on two consecutive holes. For example, on Hole 1 each team will field one Singles match and one Doubles match, and the same structure will apply on Hole 2, allowing matches to progress in parallel.

Earlier editions of the WTDGC applied various procedural formats to limit unspirited tactical decisions. These measures were replaced in 2022 with the introduction of Spirit of the Game scoring and structured post-match SOTG discussions, shifting the focus from procedural control to player responsibility and fair play.

Feedback from the 2022 WTDGC highlighted that non-playing Captains and Managers valued the ability to follow and support their teams when matches started on nearby or consecutive tees. This principle is retained for 2026. All four matches between two teams will begin on consecutive holes, allowing teammates and supporters to watch, support, and follow multiple matches—particularly after completing their own play, even when they are still required to remain with their group.

MEDIA, PHOTOS & COMMUNICATIONS

WFDF will coordinate official event communications, media relations, and digital content for WTDGC 2026. Information regarding official media coverage, photography, and communication channels will be shared with teams closer to the event.

Teams are encouraged to actively support event visibility through their own communication channels, including social media, federation websites, and national press contacts. Sharing team preparations, participation announcements, and on-site content helps promote the event and increases the visibility of team disc golf internationally.

National Federations and teams that plan to engage with local or national media are welcome to do so. If teams wish, they may share press releases, media announcements, or promotional materials with WFDF, who can assist by forwarding relevant content through official event channels where appropriate.

Details regarding official event hashtags, social media handles, photo usage guidelines, and any shared PR materials will be communicated to participating teams ahead of the event. Teams with specific media requests or questions are encouraged to contact the WFDF Events Team through the official communication channels.

KEY CONTACTS

General Enquiries

Dinko Šimenc

Event Manager
World Flying Disc Federation
dinko.simenc@wfdf.sport | +385 98 1936437 (Croatia)

Registration & Finances

Karina Woldt

Managing Director – Events & Operations
World Flying Disc Federation
karina.woldt@wfdf.sport | +49 151 4045 6046 (Germany)

Competitive Aspects - Rules & Regulations

Craig Sheather

Tournament Technical Director
World Flying Disc Federation
craig.sheather@wfdf.sport | +1 604 328 2261 (Canada)

Venue & Local Organisation

Local details - Hotel, Local transportation, Food

Ričardas Zareckis

Local Organising Committee (LOC)
Lithuanian Flying Disc Federation
wtdgc2026@gmail.com | +370 612 55088 (WhatsApp)

Local details - Courses, other questions

Darius Gričius

Local Organising Committee (LOC)
Team DiscCity
Lithuanian Disc Golf Federation
lithuania@pdga-europe.com | +370 687 81223 (WhatsApp)

Official Website: wtdgc.sport
Official Facebook Page: [@wfdf.wtdgc](https://www.facebook.com/wfdf.wtdgc)
Official Instagram Page: [@wfdf.wtdgc](https://www.instagram.com/wfdf.wtdgc)

QUESTIONS & ANSWERS

The questions below reflect topics that have already been raised by participating teams following the publication of Bulletin #1 and during ongoing communication with WFDF. This section is intended to provide clear and practical answers to the most common points of clarification.

Teams are encouraged to review the information in this bulletin carefully and to contact the WFDF Events Team if they have any additional questions, uncertainties, or require clarification on specific aspects of the competition or logistics. Early feedback from teams is welcome and will help ensure that future bulletins can address outstanding topics, reduce uncertainty, and provide increasingly complete and informative guidance.

- ▶ 1. Q: If a player does not stay in one of the official tournament hotels, will they be required to pay a higher player fee?

A: **No.** Player and team fees are not linked to the use of official accommodation. Teams and players are free to arrange their own accommodation without any impact on their event fees.

- ▶ 2. Q: Is it possible for a player to compete in both the Open and Masters divisions at WTDGC 2026?

A: **Yes, with specific restrictions.**

Each country fields one national team competing in two divisions (Open and Masters). Players who are Masters-eligible are also eligible to play in the Open division, and vice versa. However, the following rules apply:

- ▶ No player may play more than eight (8) matches in total. Each division consists of eight matches.
- ▶ A player may not compete in both divisions within the same round of matches. For example, if a player competes in the Masters division in Match 3, they may not compete in the Open division in Match 3.
- ▶ To be eligible to play in a division's final round, a player must have competed in at least one (1) match in that division prior to the final round, or compete in no matches at all prior.
- ▶ To compete in a division, a player must be listed among up to twelve (12) registered players for that division.
- ▶ A player registered for both divisions is required to pay two (2) player fees.

Practical note on scheduling and course locations:

The two courses used for the championship will not necessarily be located next to each other. Teams should therefore not plan on players moving directly between courses to compete in consecutive matches across divisions. For example, a player who competes in an Open match in one round should not be expected to arrive in time to play a Masters match in the following round on a different course.

For this reason, dual-division participation should be considered primarily for reserve players, players expected to play a limited number of matches, or as roster flexibility for teams with smaller squads or contingency needs.

These rules and guidelines are designed to ensure fair competition, manageable scheduling, and clear division integrity across both Open and Masters events. Further clarification or confirmation of final eligibility details will be communicated to team captains if required.